

# HERUG 2017

9. - 13. April  
Amsterdam

- University of Amsterdam:
- 30 000 Students
- 4 Campuses
- 6% foreign BA Students, 18% foreign MA
- Germany, China and UK most foreign students
- 80% funding from national government
- 3300 academic staff
- 500 PhD pa
- Academic staff 50/50 male/female but 20% female profs
- For student systems SAP and ORACLE proposed



## **Keynote „ERP is dead, isn't it?“**

Annemie Depuydt, Barbara de Bruyn, KU Leuven

- 20 years ago mainframe was over
- Perspective: ERP to "buy the best, build the rest" with SAP
- Now SAP CC with ca 100 people
- ERP is dead claim the future-seeing consultants
  - Apps force ERP underground
  - ERP projects have bad reputation as big, costly, out of time and budget
  - License and maintenance cost too high in comparison to future pay as you go model
  - Information is locked up in ERP Systems
  - Time consuming upgrades
  - ERP was not designed for the digital economy
  - ERP will be replaced by new best of breed world
  - Millennials will question ERP viability
  - ERP was not designed for the cloud
  - ERP was designed for transaction data, not big data
  - ERP is not designed for constant change
  - ERP stays behind as businesses get unbundled
- The word ERP was invented by Gartner in 1990
- There is no such thing as "the ERP System", every company has their own system
- Bimodal IT: sprinters and marathon runners are both necessary -> so ERP companies have to enable both types of going about IT
- KU Leuven's ERP System has been changing tremendously over the last 20 years, 2016 upgrade to Unicode and HANA
- Coming from ORACLE uncompressed in spite of Unicode there was storage reduction (Marcel Rabe: coming from compressed database and transporting a lot of idoc elements HANA might use more instead of less space -> archiving is necessary and does not even prevent, only slows down analysis on those data)
- SAP works as integration backbone
- SAFe 4.0 framework for agile teams aligned with business needs advance the solution beyond large waterfall Projects



## ***User Experience***

Nis Boy Naeve, VP UX SAP

- People ignore design that ignores people
- Good UX saves on training costs, support and costs for data entered the wrong way
- Fiori design concept:
  - Deliver task based user interfaces
  - Single point of access with Launchpad
  - Concept starts with overview page from where you can drill down
- Currently Fiori 2.0 got reddot design award
- Open standards with HTML5 and REST based OData services
- Fiori Applications can basically run anywhere
- Hybrid and native mobile applications make use of features of the mobile device like e.g. The camera for barcode scanning (especially enabled by Cordova Plug-ins)
- Fiori is enabled for responsive design, even though this does not make sense always
- Content can be pushed from Fiori to mobile devices for offline availability: content to go
- CoPilot supports on the fly collaboration
- Clea is the SAP Siri to be included in Fiori 2.0 by end of 2017
- All S/4 HANA content is accessible through Fiori launchpad
- GUI UX has a Fiori theme added to unify look and feel
- SAP BUILD supports designing UX
- UI theme designer helps adapting Fiori to corporate design
- SAP offers Fiori Cloud that would run the Fiori environment
- SAP Screen Personas is not cloud enabled but easy to configure
- OData can publish data and OData annotations to Fiori Elements to create a UI automatically that can be adapted at runtime
- Launchpad can be run in a Portal environment, in a GUI environment or stand alone

## ***Laying the Fiori Foundations***

Alan Cecchini, Newcastle University

- 23000 students, 5900 staff
- SAP since 1999
- Fiori is part of a program "E-Enabling"
- 2014 a Fiori Proof of Concept was conducted
- Go live with payslip Fiori ESS 2016, personal details in progress
- Agile development approach using SAP Build with Trello
- Source control must be handled by development team, is not built into the software like with ABAP -> GitHub with SAP WebIDE
- Runs on PC and Smartphone
- There are issues with specific devices so extensive testing with different environments is necessary
- Development Tools in Chrome are used to access e.g. Performance measuring
- Stress testing was done with #slack
- Documentation shared across over teams in OneNote
- Shibboleth authentication is used
- There is tracking of what channels are used to access the app

## **Fiori in HR**

Meaghan Murray, MIT

- MIT is on ECC 6.0 EHP 8 on HEC
- Fiori was chosen on grounds of modernity, mobile friendliness and futureproof technology
- Build was used but showed to be difficult for mockup design and was used for feedbacks only
- The Fiori App is linked to MIT Portal and is located in HANA Cloud Platform from whence the cloud connector makes the connection to the ERP system
- For uploads different file formats are supported for immediate storage in personnel record
- Lessons learned:
- SAP Build was a challenge
- Many options for infrastructure

## ***MIT's use of Fiori for Graduate Appointment Portal***

Garry Zacheiss

- Motto "Mens et Manus"
- 12000 staff
- 11000 students
- 85 Nobel Laureats
- First in US HER with SAP in 1996
- Move to HEC in 2016
- S/4 migration planned
- The business process for graduate appointment ( computing, approving and handing out grants) was supported in a very cryptic way and needed to be redeveloped
- Core Team of 13 different experts meets daily
- All components used are cloud based
- Mule was used instead of SAP Cloud connector
- The UI is linked into the MIT service Portal "Atlas"
- Cross Browser testing is necessary, Google Chrome most consistently successful, Safari and Edge problematic
- WebIDE better to use than eclipse
- MIT has their own enterprise GitHub and did not want to rest their code in the HCP Git
- SSO integration proved difficult and the use of reverse proxying is not supported
- HCP requires PaaS layer know how not usually present in SAP Basis teams



## ***Transformation of Portal to Fiori Launchpad***

Edwin Mukusha, University of Nebraska

- Traditional Portal is Netweaver with WebDynpro
- All content from old Portal is being rebuilt in more user friendly ways with Fiori on Launchpad
- To be device agnostic documents are displayed as image file because PDF does not work everywhere. Only if you chose to download a PDF is generated
- The Floorplanmanager WebDynpro Version of the travel management ESS was not very popular and was totally rebuilt in UI5 technology
- There is single sign on to Concur as outside site
- There is an Abap implementation running within the launchpad with a similar theme (Cobra)
- BeX Web has an own launchpad but has apart from that not been modified
- 5 full time developers, 1 full time consultant and 1 designer were active in the migration on **Neptune Development platform**
- Neptune is a SAP partner. It sits on the Abap stack so you don't need a gateway server and the regular application servers can still be used for load balancing for app-based system access.
- It is an SAP AdOn and is easily installed ->!easy to use for Abap developers. So actually the application does not need to change, there is just the new UI to be built. There is no action required from Basis team. There is no need for any OData service. All ECC roles are automatically active. Portal roles are not necessary anymore.
- The regular transport environment can be used incl version control
- Neptune created Apps can be mixed with regular OData based Apps
- Neptune does no decoupling of front end and business backend. It is like screen personas a skin that can be implemented on Abap to make it look like Fiori
- Browser quirks do not go away, IE11 was highly problematic



## **SAP SLcM Data Model Optimized**

Farrah Gonzales, Kumasi Vidya Bhushan, SAP

Strategic enhancement areas:

- SLcM comes with 9 Fiori Apps for use or change
- Improving performance by recoding for HANA
- Simplification of data model and decoupling from HR
  
- Admission registration booking, reporting are focus for reworking data model
- HRP1001 is central table that replicates into many sub table structures as bottleneck
- There will be a Central Academic Table that all this information from above goes to
- Module booking, also dependent on HR1001 will be moved to new table as well
- The rebuilt application was tested at KU Leuven
- There is a Migration report that helps take the HR1001 data to the new tables
- Admission and booking can be migrated separately
- KUL took 70 minutes for admission and registration data of 15 years, 50 min for module booking
- Datasets are reduced from 74.849.599 to 45.008.764 records for complete Migration
- SAP Standard code is ready to run after Migration
- Direct selects from the old tables have to be rewritten but that is not complicated to realize and simplifies code massively because you do not have to select from HR1001 and many dependent tables anymore but there is only one selection left to do
- There will be an Early Adopter Care Program for this Migration
- Customers will be given a data mapping document and Migration guide
- KUL has ~ 200 methods that use the old tables for selects. To change those methods took ca one day before testing
- More benefits will come using Hana but it is no necessary prerequisite
- GA: SAP Ehp8 SP 06 coming May 2017



Organization by: Natasa and Henny



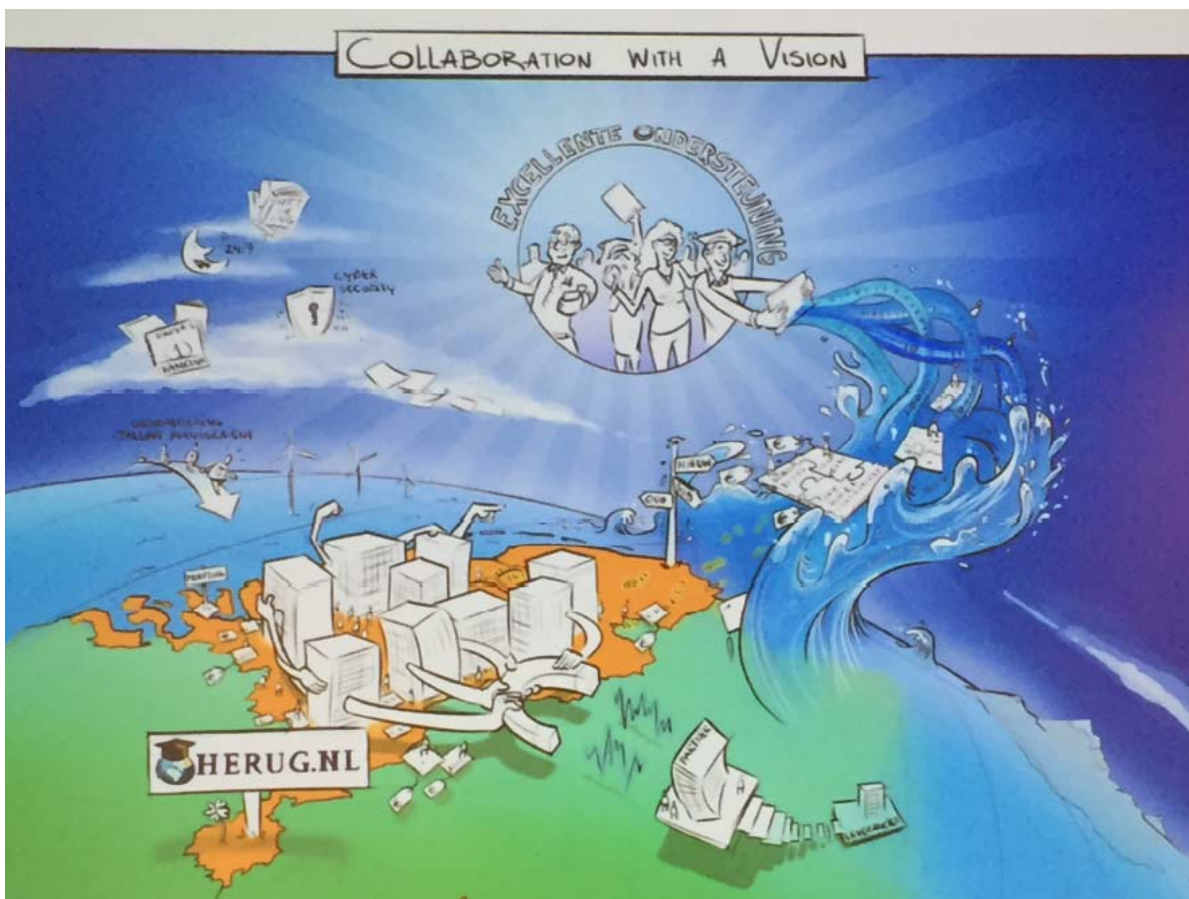
## **SAP Jam at University of Talca**

Hugo Saldago Cabrera

- Small provincial hub 3 hrs south of Santiago
- Chile is very centralized: "God is everywhere, but if you want to talk to him you must go to Santiago"
- 11000 students
- 1500 staff
- U Talca installed S/4 HANA as first public university in South America
- SAP Jam was implemented as Projekt Tool before kick off
- Kick Off 3/16 BPC go live 11/16 and shortly SD-MM and after student accounting all within one year
- In 2018 SLcM on S/4 is to be installed
- Jam became not just a project tool with e.g. Weekly progress reports shared but a collaborative platform for end user communication
- Learning material, how to videos and user documentation is published on jam
- People from different campuses work together

## **Collaboration with a Vision**

- 8 NL Universities collaborate in HERUG.NL
- Workshops were held to conjure up, a common vision
- These universities have a shared contract with SAP



## **HERUG collaboration**

- Follow @sapforhighered
- HERUG group on SAP Jam as on invitation group, no account executives of SAP

# Business Meeting

13 April 2017



- Candidate sites HERUG 2018
  - Weill Cornell - New York (submitted under mandate)
  - MIT - Boston (waiting for management approval)
  
- Candidate site HERUG 2019
  - EPFL – Switzerland (50<sup>th</sup> anniversary)
  
- Candidate sites further down the road (2020 and/or later)
  - Tec de Monterrey - Mexico
  - Three Berlin Universities (Freie/Technische/Humboldt) – Germany
  
- Suggested 2018 voting process
  - Weill Cornell (option 1: to be formalized before 15 May 2017)
  - MIT (option 2: to be formalized before/by 15 May 2017)
  
- Other options?

