



**University of
Zurich^{UZH}**

Sustainability Team



Empa

Materials Science and Technology



Professional Training for ESD.

**Learnings from an European wide study among
universities and a case from University of Zurich,
Switzerland**

Dr. Clemens Mader, Sustainability Team, University of Zurich
Scientist, Technology and Society Lab at Empa – Federal State Institute for
Materials Science and Technology, St.Gallen

October 16th 2017,
FU Berlin, Workshop „Sustainability in Teaching“ , University Alliance for Sustainability



The Rio+20 Treaty on Higher Education

Treaty Circle: 31 HE networks and institutions from around the globe

~100 signatories

Development in the advance of the Rio+20 conference in cooperation with 25 organizations from around the world.

Concentration on:

- Whole-of-institution approach
- Transformation
- Immediate – short and long-term goals

Website: <http://www.copernicus-alliance.org>



Rio +20 Treaty
On Higher Education

Home The Treaty Treaty Circle Signatories Become a Signatory Contact

Connecting the System

There are contradictions in the purpose and practice of higher education across the system. It is important to review the various policies, incentives, rewards, platforms



Principles

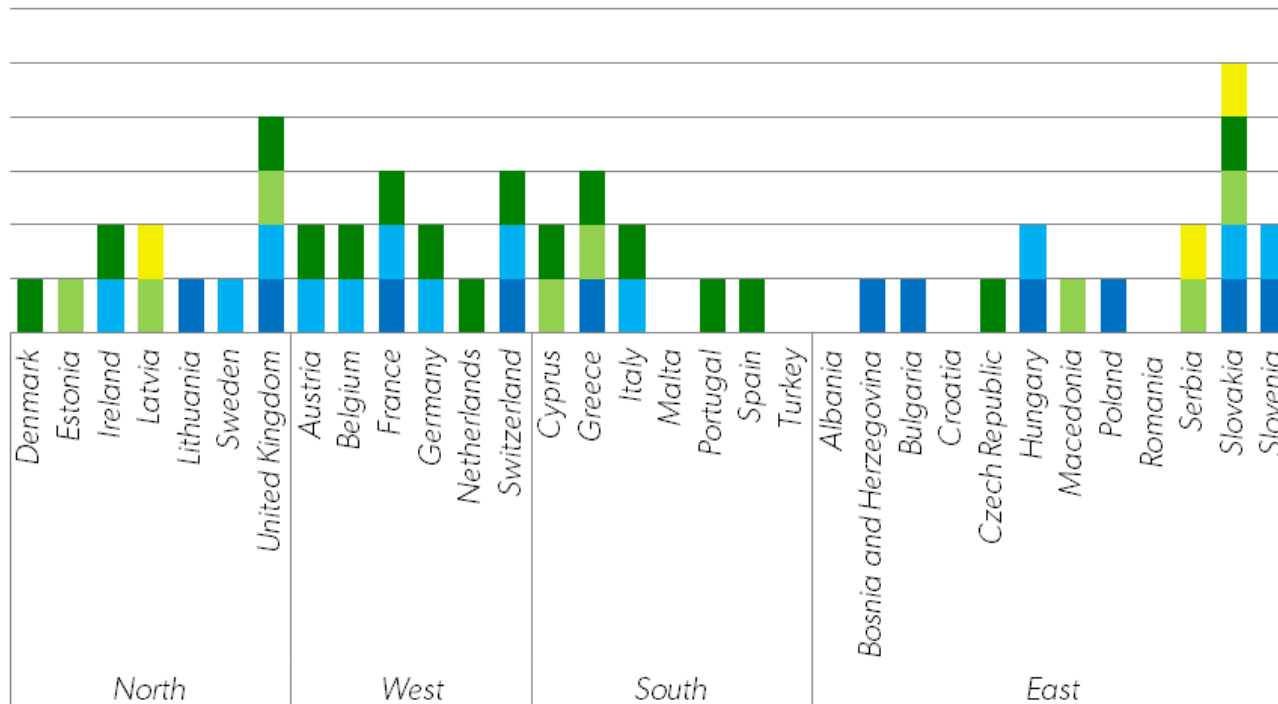
- #1: To be transformative, higher education must transform itself
- #2: Efforts across the higher education system must be aligned
- #3: Partnership underpins progress
- #4: Sustainable development is an institutional and sector-wide learning process
- #5: Facilitating access to the underprivileged
- #6: Inter- and trans- disciplinary learning and action
- #7: Redefining the notion of quality higher education
- #8: Sustainable development as a whole-of-institution commitment



Professional Training for ESD @ Universities

Overview of national strategies, policies or legislations, which recognise ESD in Higher Education in the UE4SD partner countries (one unit per category)

- Development plan for HE
- SD/Agenda 21 strategy or plan
- National legislation
- ESD/DESD strategy or plan
- HE act or strategy



STATE OF THE ART REPORT

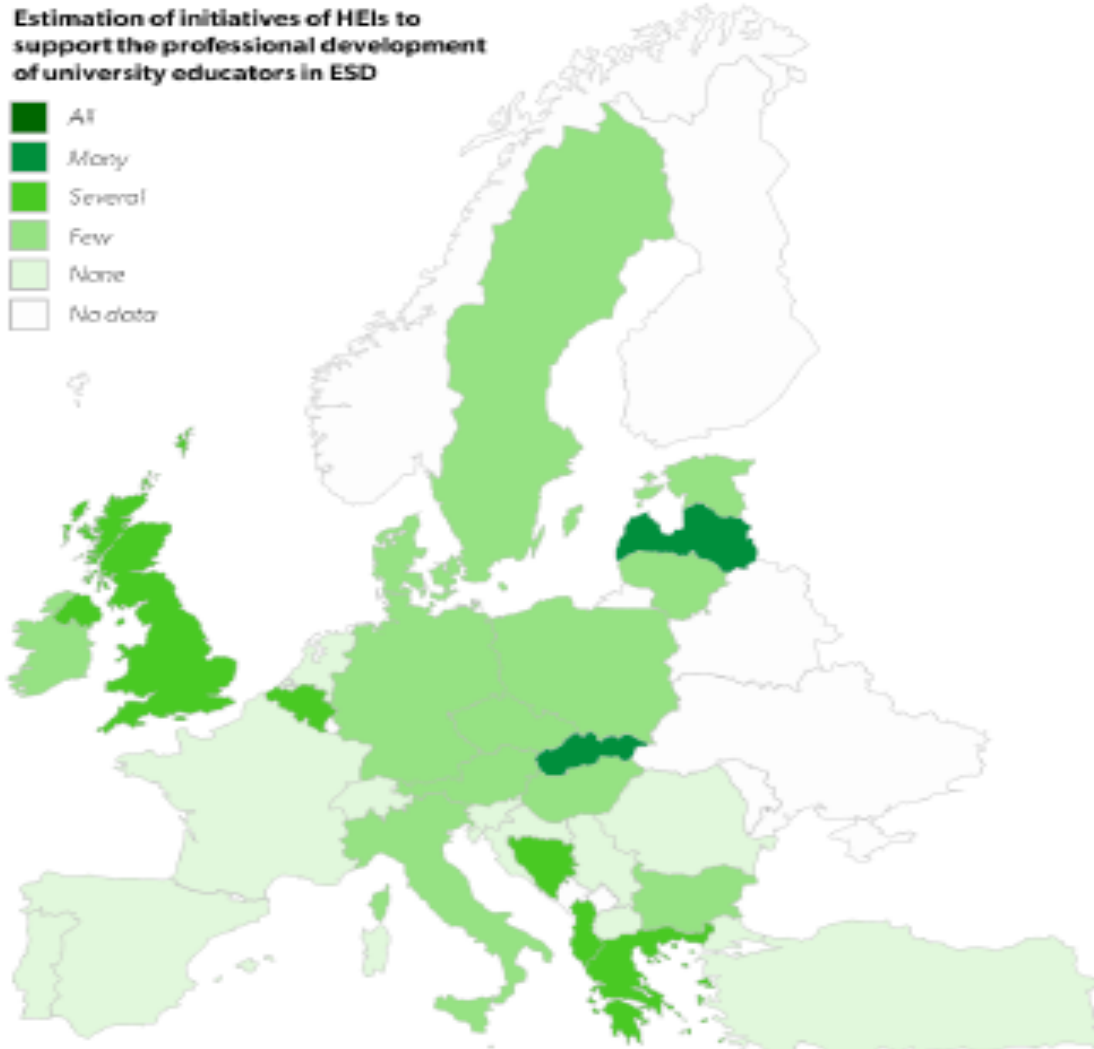
Mapping opportunities for developing Education for Sustainable Development competences in the UE4SD partner countries





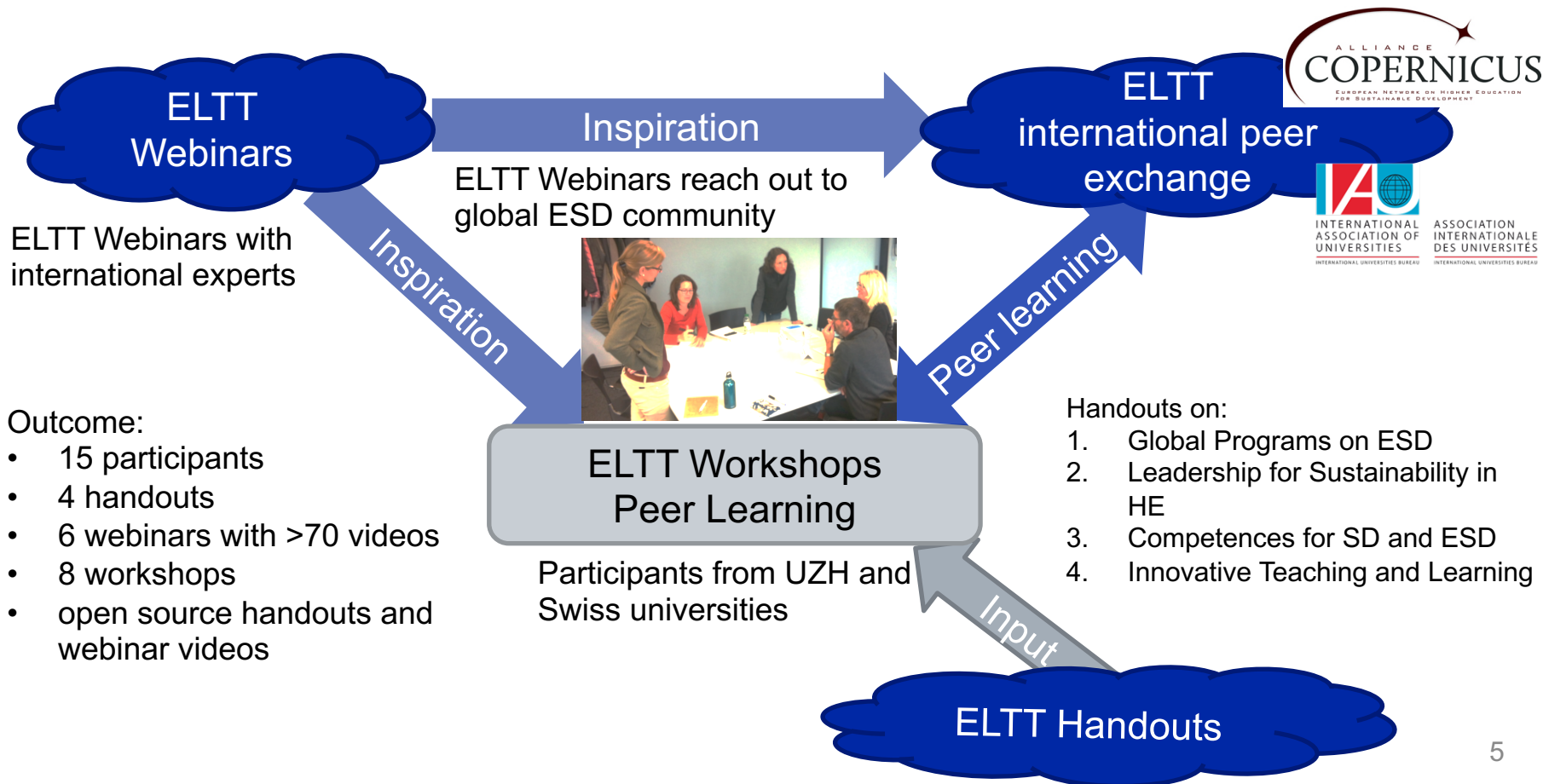
Map 3: Estimation of the occurrence of initiatives of higher education institutions to support the ESD professional development of university educators in the UE4SD partner countries

Estimation of initiatives of HEIs to support the professional development of university educators in ESD



ELTT: Enabling Leadership for Transformative Teaching and learning for sustainable development

Co-funded by the Sustainable Development at Universities Programme of the Swiss Academies of Arts and Sciences and the Stiftung Mercator





ELTT ambition: Learning based change for sustainable development

Learning based Change (LBCh),.... process which can motivate and engage people in creating sustainable futures (Tilbury 2007, p.121)”

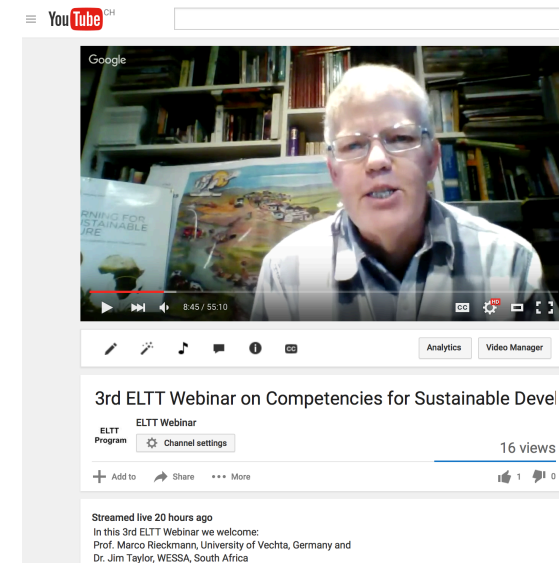
- LBCh,... build competence & change strategy to assist people and organizations to move towards sustainable development
- Pathways for LBCh: Mentoring, Facilitation, Participative inquiry, Action Learning & Research

Three forms of knowledge

Target, system and transformation knowledge

→ **ELTT approach:** blended learning combined with interactive exchange

Tilbury D., 2007: Learning based change for sustainability: perspectives and pathways,
In: Wals A., Social Learning Towards a Sustainable World, Wageningen Academic Publishing, 117-131.





A photograph of a long, narrow wooden walkway or tunnel, constructed from many vertical wooden planks. Two people are walking away from the camera in the distance. The walkway is illuminated by natural light from the sides.

**Thanks for your
attention!!**

Dr. Clemens Mader

Sustainability Team, University of Zurich

Technology and Society Lab at
Empa – Federal State Institute for Materials Science and Technology,
St.Gallen

mader@sustainability.uzh.ch

https://www.researchgate.net/profile/Clemens_Mader