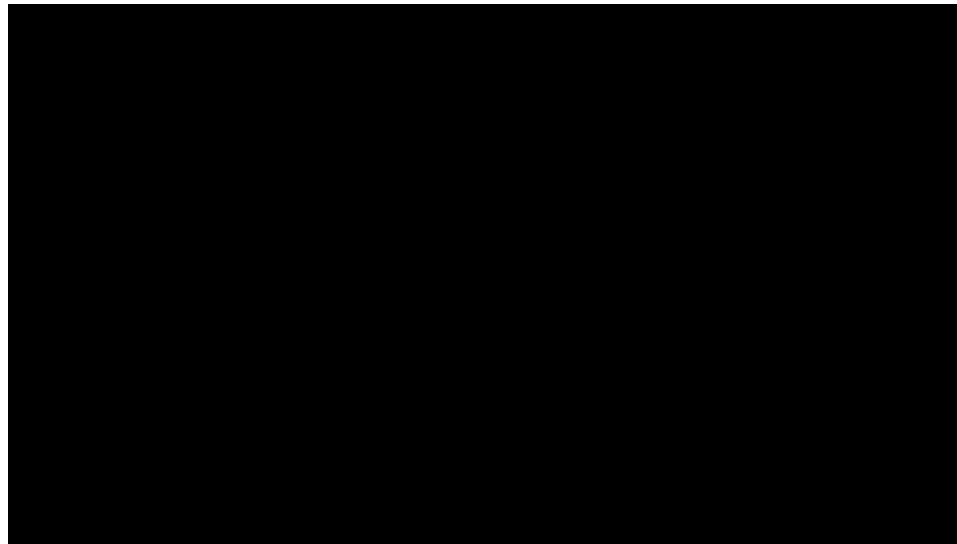


# How to make work-life balance work – TEDtalks

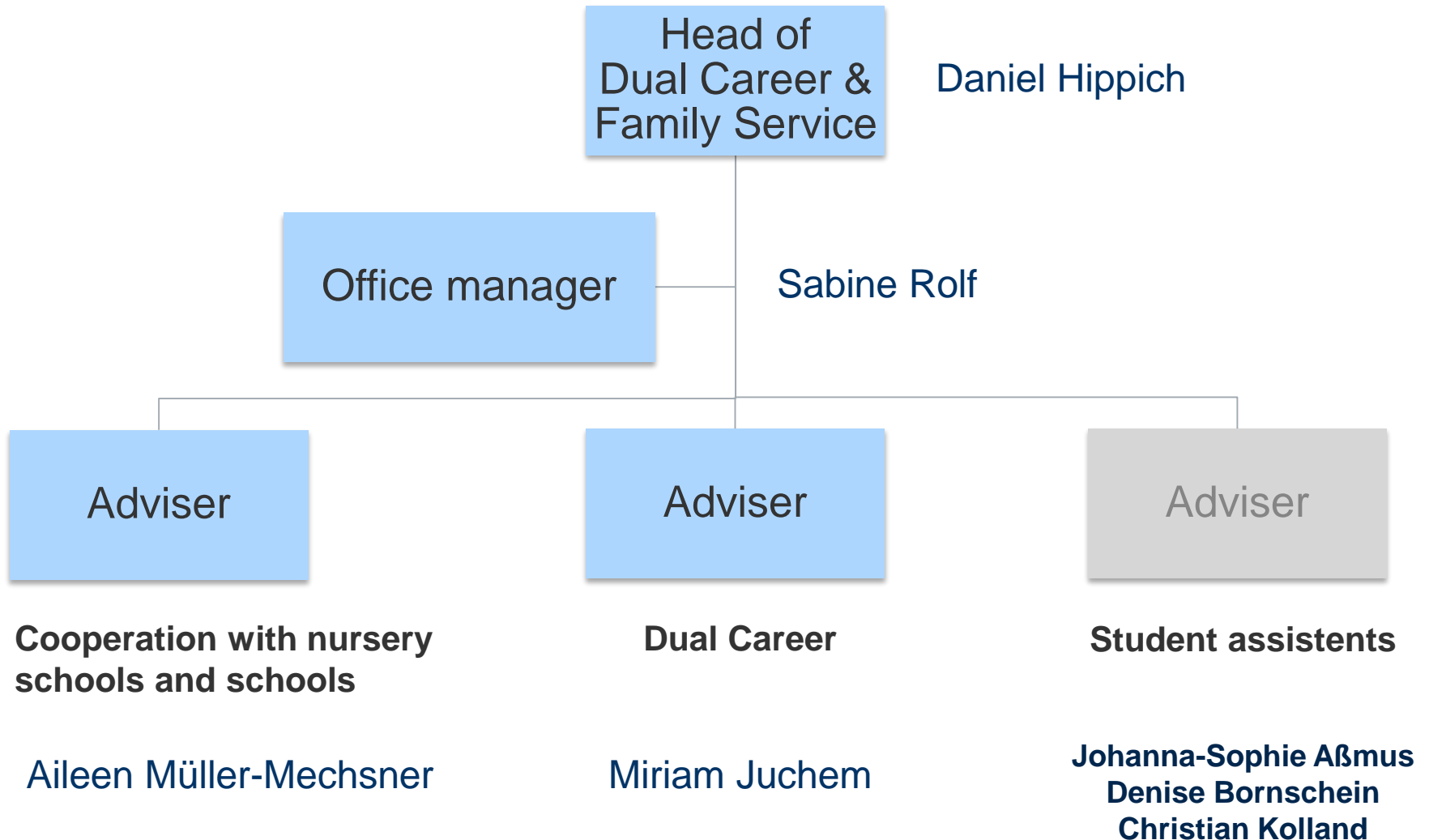


# Dual Career & Family Service

Freie Universität Berlin – a family-friendly university



# Staff



# What does family mean for the Freie Universität Berlin?

For the Freie Universität Berlin family comprises all constellations in which people take long-term social responsibility for others. This includes people who raise children and persons who care for their relatives.



# Why is family-orientation important?

- women and men want to participate equally in careers and family life → certain conditions have to exist
- aim is to create a workable balance between job satisfaction and family life
- family friendliness increases the appeal of a university
- an advantage in the competition to attract the best scientific minds

# Dual Career & Family Service

- consulting for all employees and students (i. e. questions of *child-care* and *elder-care*)
- providing information about all measures of family support (homepage, information events, flyers)
- conducting issue-specific education events for staff in cooperation with the advanced training center
- cooperation with 200 nursery schools and 50 schools
- Dual Career Service for the spouses of newly appointed professors coming to Berlin

# Family support measures

- customized child care for children of staff (national & international)
  - *emergency-care*
  - *conference-care*
- parent-child-rooms all over the campus
- nursing and changing rooms
- nursery school on campus (operated by the student union)
  - 180 slots
  - 13 slots for recipients of scholarships, grants and fellowships as well as the children of visiting scholars and scientists

# Family support measures (students)

- preferential registration for seminars → examination office
- semester-long leave of absence (students can continue to attend courses and earn credits)
- attendance → difficult for students who have family responsibilities to meet their attendance obligations
- part-time studies
- university sports offers a whole range of courses



# Contact

Freie Universität Berlin  
**Dual Career & Family Service**  
Rudeloffweg 25 – 27  
14195 Berlin

Tel.: (030) 838 – 51137

Fax: (030) 838 – 54525

E-Mail: [dcfam-service@fu-berlin.de](mailto:dcfam-service@fu-berlin.de)

**Internet: [www.fu-berlin.de/family](http://www.fu-berlin.de/family)**

